

Surveillance Case Definition for a Suspected Case:

A person who lives in or has traveled in the previous 2 weeks to areas with Chikungunya transmission, and has fever* associated with arthralgia or arthritis that is not explained by other medical conditions, with or without other extra-articular manifestations that can range from mild to severe.

* fever is usually sudden onset lasting no more than 7 days.

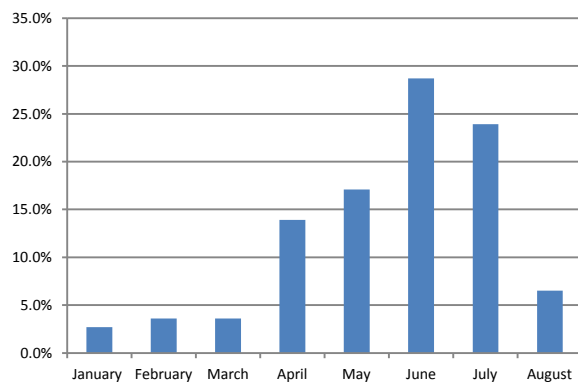
Guidelines on the Surveillance and clinical management of chikungunya are now available on the Epidemiology Unit's Website ;

https://www.epid.gov.lk/storage/post/pdfs/en_684fe52498043_Clinical%20Management%20of%20Chikungunya%20Infection%20through%20Disease%20Phases.pdf1.

1. Guideline for surveillance of Chikungunya (May, 2025)
2. Laboratory Diagnosis and Acute Clinical Management of Chikungunya (April 2025)
3. Clinical Management of Chikungunya through Disease Phases (Reviewed and updated, June 2025)

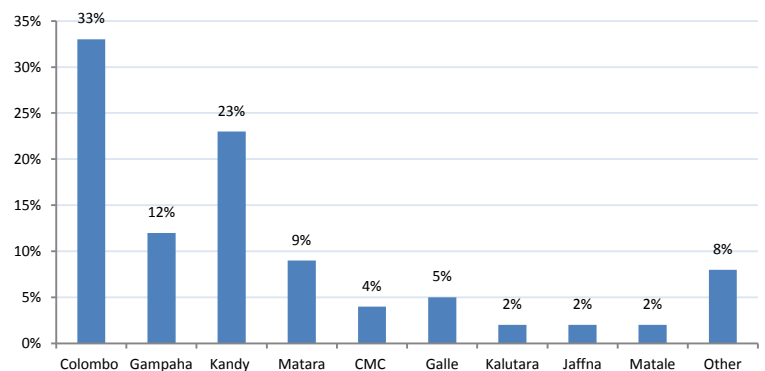
In any area where cases fulfilling the above definition are identified, case reporting should be promptly initiated through the online system to enable timely response, prevent outbreaks, and minimize the disease burden.

Reported Cases of Chikungunya (by Month-2025)



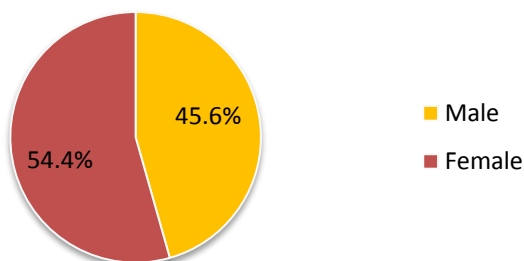
The number of reported cases has now begun to decline; however, a substantial proportion, over 25% of the total, was recorded in July.

Reported Cases by Patient's District (Cumulative %)



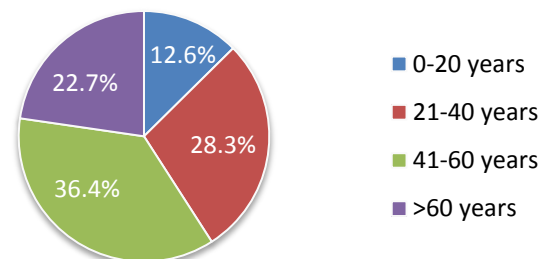
More than 50% of the reported cases were from the Western Province, with the majority (33%) from the Colombo District.

Gender distribution of reported Chikungunya cases



The majority of reported cases (54.4%) were among females.

Age distribution of reported Chikungunya cases



An upward trend is observed in Chikungunya cases among the paediatric age group.

Following is the link to be used by treating clinicians to report suspected/ confirmed cases of Chikungunya:

<https://bit.ly/Epid-cgCRF>